

DECEMBER 15, 1958

P
O
R
T
U
G
U
E
S
E
 I
N
D
I
A



Description: *Holarrhena antidysenterica*
Designer:
Design Size: 37½ x 37½ mm
Producer: Casa da Moeda (Lisbon, Portugal)
Process: lithography
Format: panes of 50 (5 x 10)
Selvage: color registration marks above positions 1 and 5 and below 41 and 50; color registration lines above position 3 and below 48; black control number right of position 5; perforations through top

Quantity:
Paper: white
Watermark: none
Perforations: 13½
Margins: name of producer at bottom right
Purpose: publicize the 6th International Congress on Tropical Medicine and Malaria, Lisbon, Portugal, September 1958.
Sub-topics: medicinal plant
Notes: see Portuguese India (1959) Scott 596 for overprint
Price: B

569

Checklist: unused __ used __ fdc __ other ____



title page



stamp page

Description: booklet with stamp for each of eight colonies hinged to page with descriptive text in Portuguese; pages repeated without stamps but with text in French and again with text in English
Size: 97 x 134 mm
Quantity:
Notes: distributed to congress attendees; see Portuguese Colonies • 1958
Price: G

1958 Presentation Booklet

Checklist: ____

1
9
5
8

1

DECEMBER 15, 1958

PORTUGUESE INDIA • 1958

1034



Description: pane of 50 showing selvage markings and perforation pattern

Size:

Quantity:

Notes:

Price: E

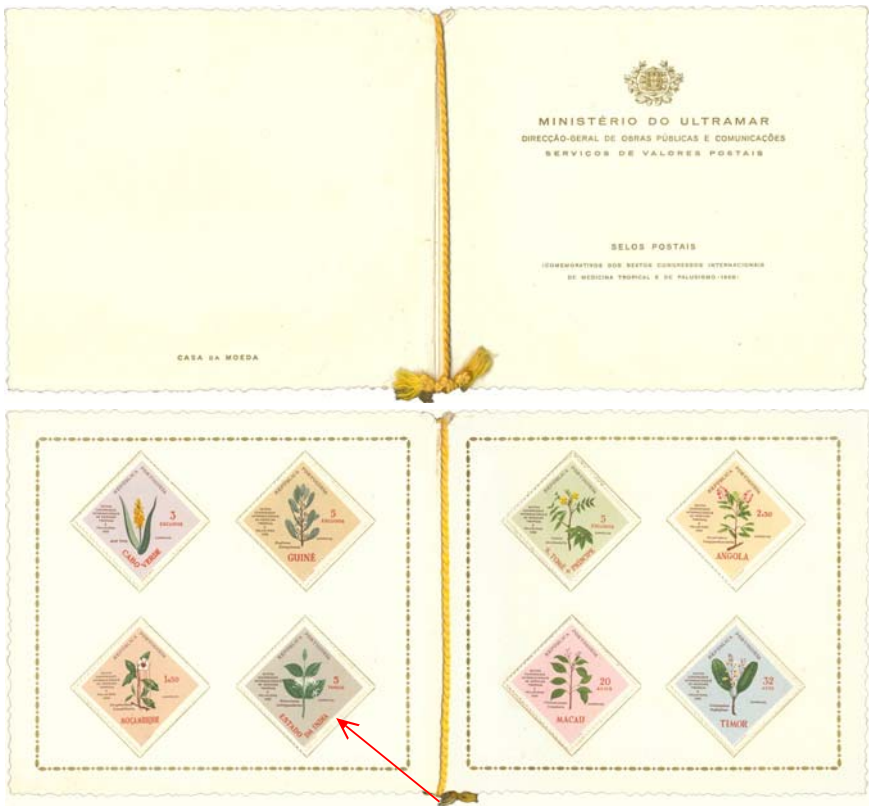
DECEMBER 15, 1958

P
O
R
T
U
G
U
E
S
E

I
N
D
I
A

•

1
9
5
8



Description: presentation folder containing the omnibus issue for eight colonies

Folder Size: 97 x 133 mm

Quantity:

Purpose:

Price: F

1958 Presentation Folder

Checklist: ____

DECEMBER 15, 1958

P
O
R
T
U
G
U
E
S
E

I
N
D
I
A

•

1
9
5
8

FIRST DAY CANCELLATIONS



Size: 25 mm
Notes: name of office not included

PN-1 *Panjim*

P
O
R
T
U
G
U
E
S
E

I
N
D
I
A

•

1
9
5
8

FIRST DAY CANCELLATIONS





**P
O
R
T
U
G
U
E
S
E

I
N
D
I
A

•

1
9
5
8**

FIRST DAY CACHETS

<p style="text-align: center;">VI Congresso Internacional de MEDICINA TROPICAL e PALUDISMO</p> <div style="text-align: center;">  </div> <p style="text-align: center;">PRIMEIRO DIA DE EMISSÃO 15-12-1958</p> <p style="font-size: small; text-align: left;">L.06490-15</p>	<p>Type: PI-1 Producer: LuMaNo Size: 54 x 62 mm Notes:</p> <hr/> <p>Type: PI-2 Producer: NAIK Size: Notes:</p>	<p style="text-align: center;"><i>Para Comemorar</i> os <i>Sextos Congressos Internacionais de</i> <i>Medicina Tropical</i> e de <i>Paludismo</i> 1.º Dia de Circulação 15 de Dezembro de 1958</p> <p style="font-size: x-small; transform: rotate(-90deg); position: absolute; left: -40px; top: 50px;">EE. NAIK 8.510-50A</p>
<div style="text-align: center;">  </div>	<p>Type: PI-3 Producer: Size: 68 x 66 mm Notes:</p> <hr/> <p>Type: PI-4 Producer: Size: 68 x 66 mm Notes:</p>	<div style="text-align: center;">  </div>
<p style="text-align: center;">TROPICAL MEDICINE CONGRESS</p> <div style="text-align: center;">  </div> <p style="text-align: center;"><i>First Day Cover</i></p>	<p>Type: PI-5 Producer: Size: 42 x 68 mm Notes:</p>	

P
O
R
T
U
G
U
E
S
E

I
N
D
I
A

•

1
9
5
8

FIRST DAY CACHETS

**P
O
R
T
U
G
U
E
S
E

I
N
D
I
A

•

1
9
5
8**

FIRST DAY USAGE

P
O
R
T
U
G
U
E
S
E

I
N
D
I
A

•

1
9
5
8



Cancel: PN-1
Cacher: PI-1
Size: 164 x 93 mm
Notes:
Price: D

1

Checklist: __



Cancel: PN-1
Cacher: PI-2
Size: 164 x 93 mm
Notes:
Price: D

2

Checklist: __



Cancel: PN-1
Cacher: PI-3
Size: 164 x 93 mm
Notes:
Price: D

3

Checklist: __



Cancel: PN-1
Cacher: PI-4
Size:
Notes:
Price: D

4

Checklist: __

9

FIRST DAY USAGE

P
O
R
T
U
G
U
E
S
E

I
N
D
I
A

•

1
9
5
8



Cancel: PN-1
Cacher: PI-5
Size:
Notes:
Price: D

5

Checklist: __



Cancel: PN-1
Notes:
Price: D

6

Checklist: __

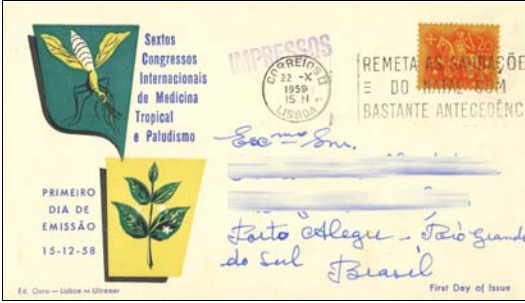
RELATED MATERIAL

P
O
R
T
U
G
U
E
S
E

I
N
D
I
A

•

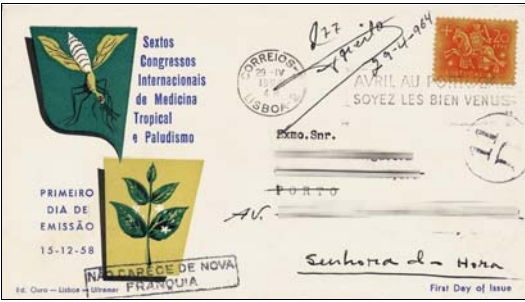
1
9
5
8



Cancel: Lisbon, Portugal: October 22, 1959
Notes: postal use cover with cachet prepared for 1958 tropical medicine issue
Price: D

RM1

Checklist: ___



Cancel: Lisbon, Portugal: April 29, 1964
Notes: with cachet prepared for 1958 tropical medicine issue; forwarded; postage due mark on front; Porto forwarding mark on back
Price: D

RM2

Checklist: ___

RELATED MATERIAL

**P
O
R
T
U
G
U
E
S
E

I
N
D
I
A

•

1
9
5
8**