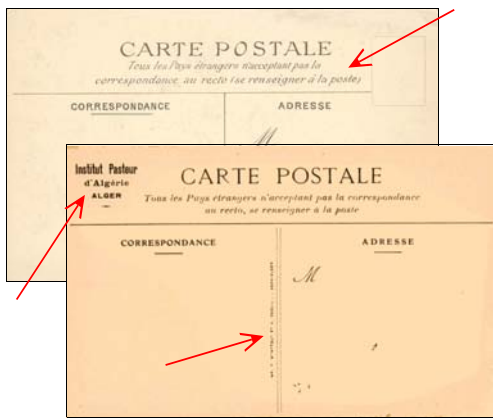


ANTI-MALARIA SERVICE POSTCARDS

ALGERIA

1920s

Under the direction of Doctors Edmond and Etienne Sergent of the Pasteur Institute of Algeria, the Algerian Health Service produced postcards promoting malaria control and prevention. Issued in the 1920s in at least two series, the cards describe malaria transmission, prevention, and prophylaxis. One group (A) of cards is labeled CONTRE LE PALUDISME and another group (B) PROPHYLAXIE DU PALUDISME. Additional cards (C-D) from the institute or the health service are also presented below. Horizontal cards measure 142 x 63 mm; vertical cards measure 63 x 142 mm. The cards shown are those reported to date. Others may exist.



Notes: Type I: different layout of text at top; no printer's name. Type II: Institute Pasteur at upper left; double dividing line with printer's name; heavier card stock. the reverse of the cards has no malaria-related text

Type I
Type II

Type A Reverse

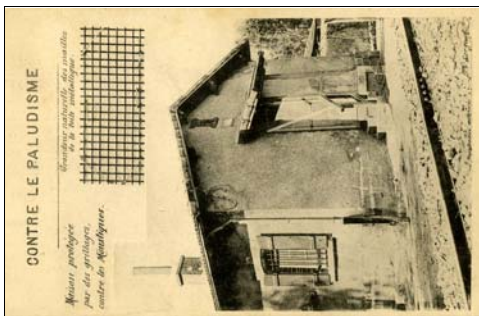


Image: screen applications
Reverse: type I
Text: House protected against mosquitoes by screens. / Actual size of the mesh of the screen.
Notes: image prepared by the Drs. Sergent
Price: D

A1

Checklist: unused __ used __



Image: views of house with screens on windows and doors
Reverse: type I
Text: MECHANICAL DEFENSE / (Latticed doors and windows)
Notes: image prepared by the Drs. Sergent
Price: D

A2

Checklist: unused __ used __

ANTI-MALARIA SERVICE POSTCARDS

A
L
G
E
R
I
A

1
9
2
0
S



A3

Image: comparison of *Culex* and *Anopheles* larva

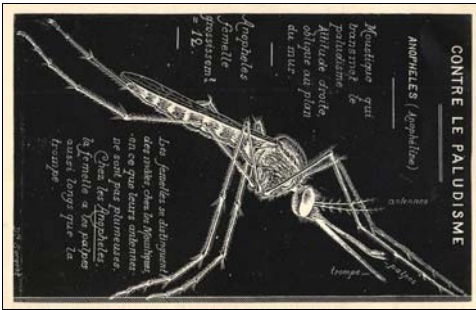
Reverse: type I

Text: The mosquitoes lay eggs on the surface of stagnant / or slow moving water. The eggs hatch into larvae (top) followed by description of attitude and respiration methods

Notes: drawing is a 12x enlargement of larvae

Price: D

Checklist: unused __ used __



A3A

Image: mosquito identification: *Culex* sp.

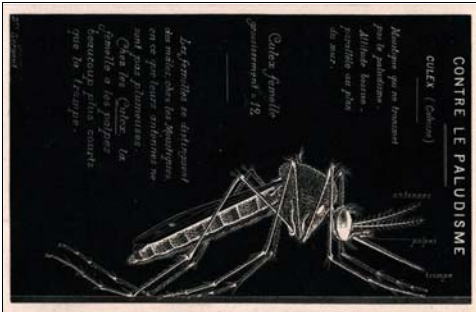
Reverse: type I and II

Text: Mosquito that transmits malaria: Attitude oblique to wall (upper left); and description of male and female (lower right)

Notes: drawing is a 12x enlargement of female

Price: D

Checklist: unused __ used __



A4

Image: mosquito identification: *Culex* sp.

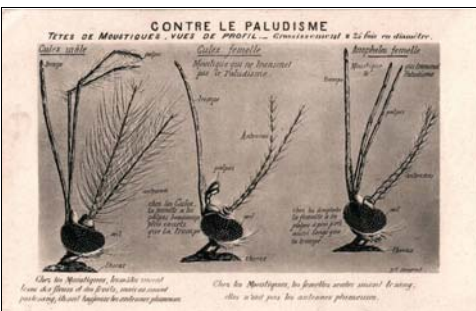
Reverse: type I

Text: Mosquitoes that do not transmit malaria: Attitude uneven to parallel to wall (top left) followed by description of male and female

Notes: drawing is an enlargement of mosquito

Price: D

Checklist: unused __ used __



A5

Image: heads of mosquitoes: *Culex* (male - female) and *Anopheles*

Reverse: type I

Text: identification of head parts followed by Males suck from flowers and fruits, but do not suck blood. They always have feathery antennae; Only the females suck blood. They do not have feathery antennae (at bottom)

Notes: heads are drawn at 25x actual size

Price: D

Checklist: unused __ used __

ANTI-MALARIA SERVICE POSTCARDS

ALGERIA • 1920S



Image: eggs, larva, nymph, and adult *Anopheles* female
Reverse: type I
Text: ANOPHELES (Anophéline) / Mosquito that transmits malaria
Notes: image prepared by the Drs. Sergent
Price: D

A6

Checklist: unused __ used __



Image: spraying marshes and collecting samples
Reverse: type I
Text: LOCATE and SPRAY OIL on SITES with ANOPHELINES
Notes: image prepared by the Drs. Sergent
Price: D

A7

Checklist: unused __ used __



Image: spraying marsh
Reverse: type II
Text: Applying oil to marsh, home of Anophelines
Notes: image prepared by the Drs. Sergent
Price: D

A8

Checklist: unused __ used __



Image: water trough with *Culex* species
Reverse: type I and II
Text: Mosquito that does not transmit malaria
Notes: image prepared by the Drs. Sergent
Price: D

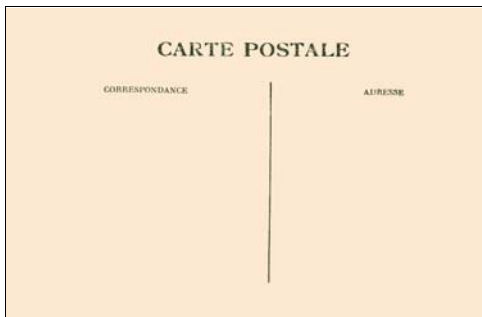
A9

Checklist: unused __ used __

ANTI-MALARIA SERVICE POSTCARDS

A
L
G
E
R
I
A

1
9
2
0
S



Notes: the reverse of the cards has no malaria-related text

Type B Reverse



Image: health worker distributing quinine
Text: Quinisation of indigenous / infants by a quinine agent of the Algerian Antimalaria Service

Notes:
Price: D

B1

Checklist: unused used

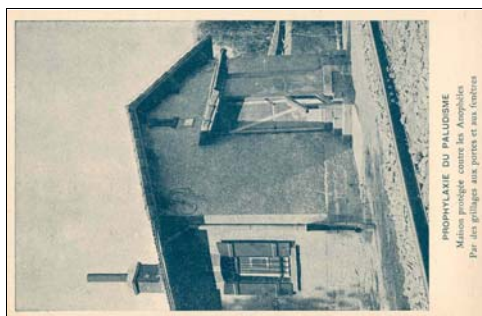


Image: house with screens
Text: House protected from Anophelines / by screens on windows and doors same photo as card A1
Notes:
Price: D

B2

Checklist: unused used

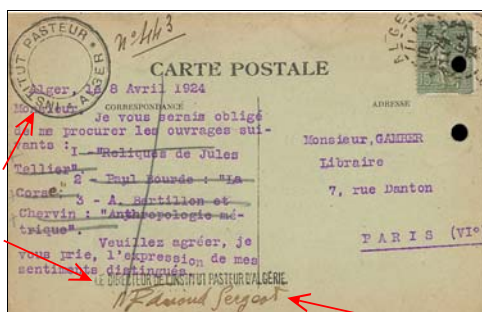


Image: as above: used and signed by Dr. Edmond Sergent
Cancel: Algiers: April 11, 1924
Notes: Pasteur Institute handstamp at upper left; Pasteur Institute director's handstamp above signature
Price: F

Dr Edmond Sergent

B2a

Checklist: unused used

ANTI-MALARIA SERVICE POSTCARDS

ALGERIA • 1920S

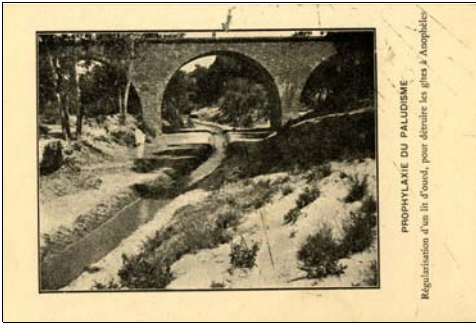


Image: monitoring for mosquito larva
Text: Regularly monitor streams and ponds for larva of Anophelines
Notes:
Price: D

B3

Checklist: unused ___ used ___



Image: spraying a canal
Text: Antilarval measures on the banks of a canal. Weeding and spraying oil
Notes:
Price: D

B4

Checklist: unused ___ used ___

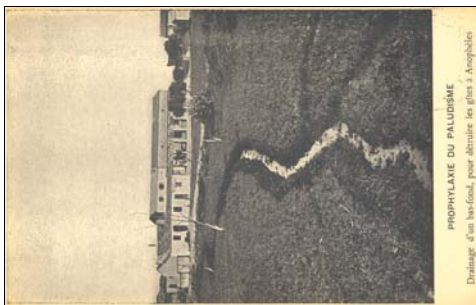


Image: drainage ditch
Text: A shallow drainage, to destroy anopheles deposits
Notes: Pasteur Institute handstamp on reverse
Price: D



B5

Checklist: unused ___ used ___

ANTI-MALARIA SERVICE POSTCARDS

ALGERIA • 1920S

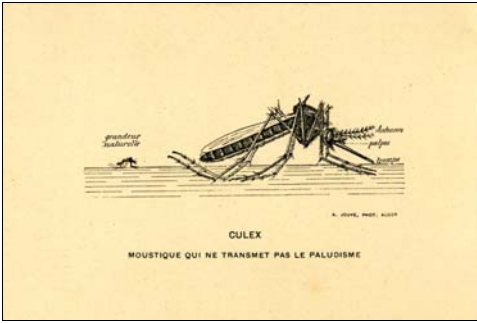


Image: Culex species
Text: MOSQUITO THAT DOES NOT TRANSMIT MALARIA
Notes: image by A. Jouve
Price: D

C1

Checklist: unused __ used __

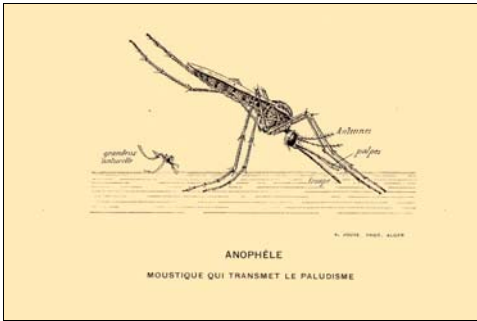


Image: Anopheles species
Text: MOSQUITO THAT TRANSMITS MALARIA
Notes: image by A. Jouve
Price: D

C2

Checklist: unused __ used __



Image: Dr. Edmond Sergent
Text: MONSIEUR PROFESSOR SERGENT
Notes:
Price: D

D1

Checklist: unused __ used __